

TEMPRETRIEVER

LOW COST REUSABLE TEMPERATURE DATA LOGGER

Features

- Pushbutton Start/Stop
- LED Alarm Indication
- User Selectable Alarm Limits
- Reusable
- Programmable Start Time
- Real time Operation
- Miniature Size
- 38,400 Baud Offload Speed
- Low Cost
- CE Approved

Benefits

- Simple Setup and Installation
- Minimal Long-Term Maintenance
- Long-Term Field Deployment

Applications

- Implement HACCP Programs
- Record Temperature of Perishable Goods in Transit
- Warehouse Monitoring
- Environmental Studies
- HVAC
- Museum Monitoring
- Replace Costly Strip Chart Recorders
- Medical and Pharmaceutical

The TempRetriever is a low cost, reusable temperature recording device which allows for a myriad of applications. The device excels in dry applications such as shipping, museums, R&D, warehouses and HVAC. It boasts an accuracy of ± 0.5 °C and a resolution of 0.1 °C. The TempRetriever can store up to 16,383 readings in its non-volatile memory. This coupled with up to a one year battery life and LED alarm indication makes this a perfect temperature recorder when keeping costs down is paramount.



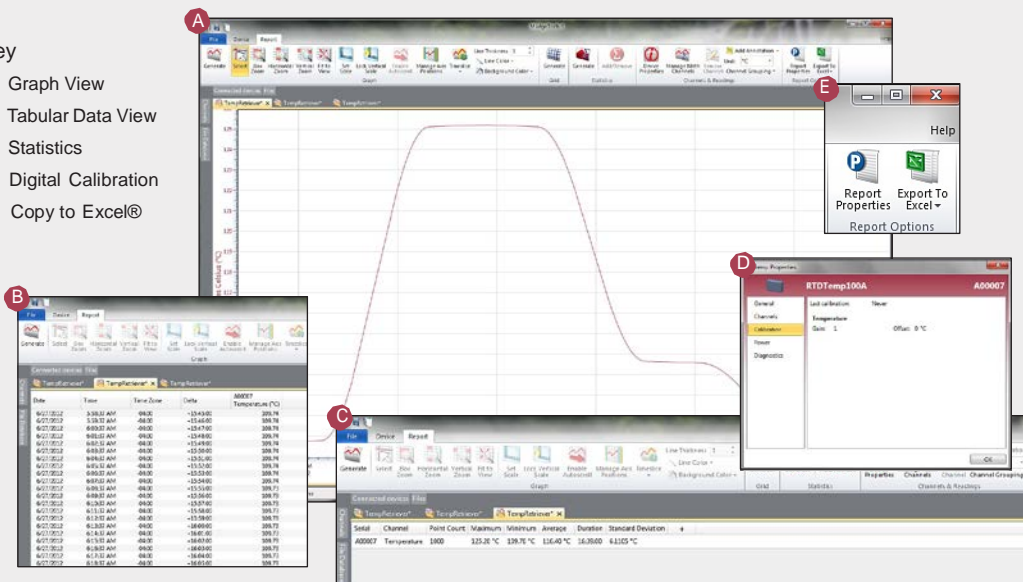
The MadgeTech software includes a full host of features that allows the user to set the start method (i.e. pushbutton, delayed start or start now), the start date and time, sample rate, high/low alarm limits, 6-character device ID and a 16-character extended ID. Data can be offloaded and displayed in °C, °F, K and °R. The software will also automatically calculate Mean Kinetic Temperature as well as other useful statistics to simplify analysis. For additional custom analysis, the data can be quickly exported into a MS Excel® spreadsheet with the click of a button.

Industries such as education, research, and perishable goods transport will all benefit from the remarkable value this device represents.

MADGETECH DATA LOGGER SOFTWARE

Key

- A** Graph View
- B** Tabular Data View
- C** Statistics
- D** Digital Calibration
- E** Copy to Excel®



Software Features:

- Multiple graph overlay
- Statistics
- Digital calibration
- Zoom in/ zoom out
- Lethality equations (F0, PU)
- Mean Kinetic Temperature
- Full time zone support
- Data annotation
- Min./Max./Average lines
- Data table view
- Automatic report generation
- Summary view
- Multilingual

TEMPRETRIEVER SPECIFICATIONS*

Temperature Sensor:	Semiconductor
Temperature Range:	-40 °C to +80 °C (-40 °F to +176 °F)
Temperature Resolution:	0.1 °C (0.18 °F)
Calibrated Accuracy:	±0.5 °C (0 °C to +50 °C)
Alarm:	Programmable high and low limits; when logged exceeds either limit, red LED blinks every 3 seconds.
Activity Indicator:	Green LED blinks every 15 seconds to indicate device has been started.
Start Modes:	Software programmable immediate start or delay start up to six months in advance; or external pushbutton start/stop.
Real Time Recording:	May be used with PC to monitor and record data in real time.
Memory:	16,383 readings
Reading Rate:	1 reading every 5 seconds up to 1 reading every 30 minutes
Calibration:	Digital calibration through software
Calibration Date:	Automatically recorded within device

Battery Type:	3.6V lithium battery included, user replaceable
Battery Life:	1 year typical (1 minute reading rate at +25 °C (+77 °F))
Data Format:	Date and time stamped °C, °F, K, °R
Time Accuracy:	±1 minute/month at +20 °C (+68 °F) (RS232 cable not in use)
Computer Interface:	PC serial or USB (interface cable required); 38,400 baud
Software:	XP SP3/Vista/Windows 7/Windows 8
Operating Environment:	-40 °C to +80 °C (-40 °F to +176 °F), 0 %RH to 95 %RH non-condensing
Dimensions:	1.4 in x 2.2 in x 0.6 in (36 mm x 56 mm x 16 mm)
Weight:	0.8 oz (23 g)
Materials:	ABS plastic
Approvals:	CE

BATTERY WARNING: FIRE, EXPLOSION, AND SEVERE BURN HAZARD. DO NOT SHORT CIRCUIT, CHARGE, FORCE OVER DISCHARGE, CRUSH, PENETRATE, OR INCINERATE. BATTERY MAY LEAK OR EXPLODE IF HEATED ABOVE 100 °C (212 °F).

*SPECIFICATIONS ARE SUBJECT TO CHANGE WITHOUT NOTICE. SPECIFIC WARRANTY REMEDY LIMITATIONS APPLY.

ORDERING INFORMATION

MODEL	DESCRIPTION
TEMPRETRIEVER	Low Cost, Reusable, Temperature Recorder
IFC110	Software, manual and RS232 interface cable
IFC200	Software, manual and USB interface cable
*NIST	NIST Calibration Certificate
LTC-7PN	Replacement battery for TempRetriever
MadgeTech 4 Secure Software License	License for MadgeTech Secure Software (unlimited users, 1 license per computer, more licenses are available.)

*To order the product with the NIST certificate add -CERT to the end of the part number.

ASK ABOUT
OUR OTHER
DATA
LOGGERS

- Temperature
- Humidity
- Pressure
- pH
- Level
- Shock
- LCD Display
- Pulse/Event/State
- Current
- Voltage Wireless
- Intrinsically Safe
- Spectral Vibration
- Motion