

OCTTEMP 8 CHANNEL THERMOCOUPLE DATA LOGGER

Features

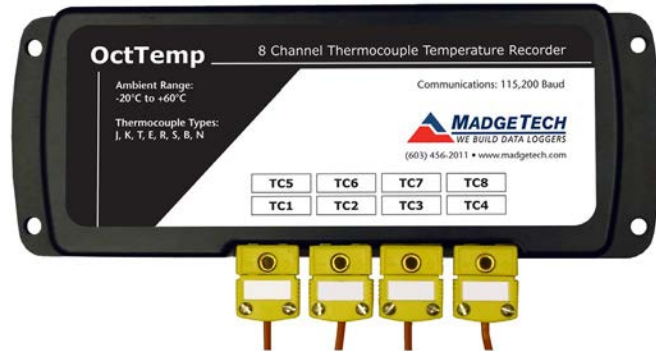
- 4 Hz Reading Rate
- 500,000 Readings per Channel
- Open Channel Detection
- Title Channels
- Accepts Thermocouple Types
J, K, T, E, R, S, B, N
- External Power or User Replaceable Battery
- Pushbutton or Programmable Start

Benefits

- Simple Setup and Installation
- Minimal Long-Term Maintenance
- Long-Term Field Deployment

Applications

- Warehouse Monitoring
- Refrigerator Monitoring
- Medical and Pharmaceutical
- Oven Monitoring
- Smoke Houses
- Food Processing
- HVAC
- Engine Studies



*Thermocouple Plugs/Probes Sold Separately

The OctTemp is an eight channel thermocouple data logger with a reading rate of up to 4 Hz. It can measure and record 500,000 readings per channel. To maximize memory capacity, users can enable or disable channels. For easy identification, each channel can be named with up to a ten digit title.

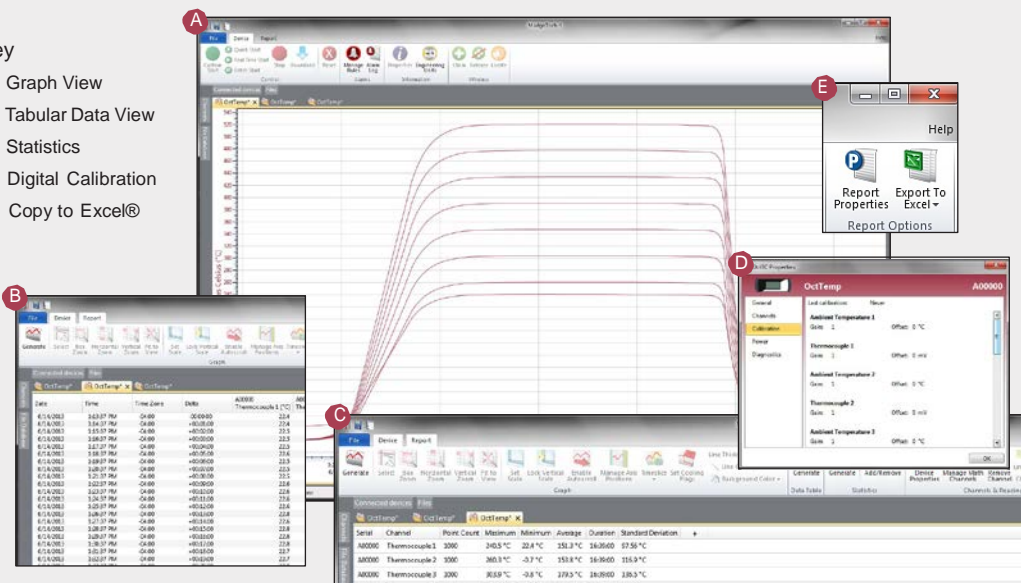
In addition, the OctTemp features individual cold junction compensation for each channel providing increased accuracy and response time, and if a probe is removed or severed during logging, the software automatically annotates the data.

The OctTemp is ideal for a variety of applications, whether it is remote temperature monitoring, or multiple points in a central location. Data from all channels is simultaneously logged. After the monitoring cycle is complete, data can be downloaded for analysis.

MADGETECH DATA LOGGER SOFTWARE

Key

- A** Graph View
- B** Tabular Data View
- C** Statistics
- D** Digital Calibration
- E** Copy to Excel®



Software Features:

- Multiple graph overlay
- Statistics
- Digital calibration
- Zoom in/ zoom out
- Lethality equations (F0, PU)
- Mean Kinetic Temperature
- Full time zone support
- Data annotation
- Min./Max./Average lines
- Data table view
- Automatic report generation
- Summary view
- Multilingual

OCTTEMP SPECIFICATIONS*

*SPECIFICATIONS ARE SUBJECT TO CHANGE WITHOUT NOTICE.

8 Internal Channels

| | |
|-------------------------|-------------------------------------|
| Temperature Range: | -20 °C to +60 °C (-4 °F to +140 °F) |
| Temperature Resolution: | 0.05 °C (0.09 °F) |
| Calibrated Accuracy: | ±0.5 °C (0 °C to +50 °C) |

8 Remote Channels

| | | | |
|------------------------------------|--|-------------------|-----------------|
| Remote Channel Thermocouple Types: | J, K, T, E, R, S, B, N | | |
| Thermocouple Connection: | Female subminiature (SMP) | | |
| Cold Junction Compensation: | Automatic, based on internal channel | | |
| Maximum Thermocouple Resistance: | 1000 Ω, <100 Ω recommended | | |
| <u>Thermocouple</u> | <u>Range (°C)</u> | <u>Resolution</u> | <u>Accuracy</u> |
| J | -210 to +760 | 0.1 °C | ±0.5 °C |
| K | -270 to +1370 | 0.1 °C | ±0.5 °C |
| T | -270 to +400 | 0.1 °C | ±0.5 °C |
| E | -270 to +980 | 0.1 °C | ±0.5 °C |
| R | -50 to +1760 | 0.5 °C | ±2.0 °C |
| S | -50 to +1760 | 0.5 °C | ±2.0 °C |
| B | +50 to +1820 | 0.5 °C | ±2.0 °C |
| N | -270 to +1300 | 0.1 °C | ±0.5 °C |
| Start Modes: | Software programmable immediate start or delay start up to six months in advance | | |

| | |
|------------------------|---|
| Real Time Recording: | May be used with PC to monitor and record data in real time |
| Memory: | 500,000 readings per channel, channels can be disabled to increase memory |
| Reading Rate: | 4 readings every second up to 1 reading every 24 hours |
| Calibration: | Digital calibration through software |
| Calibration Date: | Automatically recorded within device |
| Battery Type: | 9 Volt lithium or alkaline battery included, user replaceable |
| Battery Life: | 18 months typical |
| Data Format: | Date and time stamped °C, °F, K, °R, mV, V |
| Time Accuracy: | ±1 minute/month |
| Computer Interface: | USB (Interface cable required); 115,200 baud |
| Software: | XP SP3/Vista/Windows 7/Windows 8 (MadgeTech 4 only) |
| Operating Environment: | -20 °C to +60 °C (-4 °F to +140 °F), 0 %RH to 95 %RH non-condensing |
| Dimensions: | 7.24 in x 2.7 in x 1.26 in (183 mm x 68 mm x 32 mm) |
| Material: | Black anodized aluminum |
| Weight: | 17.3 oz (490 g) |
| Approvals: | CE |

BATTERY WARNING: FIRE, EXPLOSION, AND SEVERE BURN HAZARD. DO NOT SHORT CIRCUIT, CHARGE, FORCE OVER DISCHARGE, CRUSH, PENETRATE, OR INCINERATE. BATTERY MAY LEAK OR EXPLODE IF HEATED ABOVE 80 °C (176 °F).

ORDERING INFORMATION

| MODEL | DESCRIPTION |
|---------|--|
| OCTTEMP | 8 Channel Thermocouple Recorder |
| IFC200 | Software, manual and USB interface cable |
| *NIST | NIST Calibration Certificate |
| U9VL-J | Replacement battery for OctTemp |

*To order the product with the NIST certificate add *-CERT* to the end of the part number.

ASK ABOUT OUR OTHER DATA LOGGERS

- Temperature
- Humidity
- Pressure
- pH
- Level
- Shock
- LCD Display
- Pulse/Event/State
- Current
- Voltage
- Wireless
- Intrinsically Safe
- Spectral
- Vibration
- Motion

For enquiries, please contact sales@valutemp.com.sg or visit our website at www.valutemp.net