

MOTOR101A POWER CYCLE DATA LOGGER SYSTEM

Features

- No External Power Required
- 150mA Trip Point
- Compatible up to 200 Amps
- Real Time Operation
- Miniature Size
- Reusable
- User-friendly
- Low Cost

The Motor101A measures and records on and off status changes for motors or other equipment drawing up to 200 Amps. The state change occurs when the current switch exceeds the 150mA set point. This allows for most basic equipment to be monitored.

Benefits

- Simple Setup and Installation
- Minimal Long-Term Maintenance
- Long-Term Field Deployment

Applications

- Energy Audits
- Equipment Monitoring
- Heating and Cooling Systems
- Fans
- Power Supply On/Off
- Monitoring Gas, Water or Electric Pumps
- Time Studies

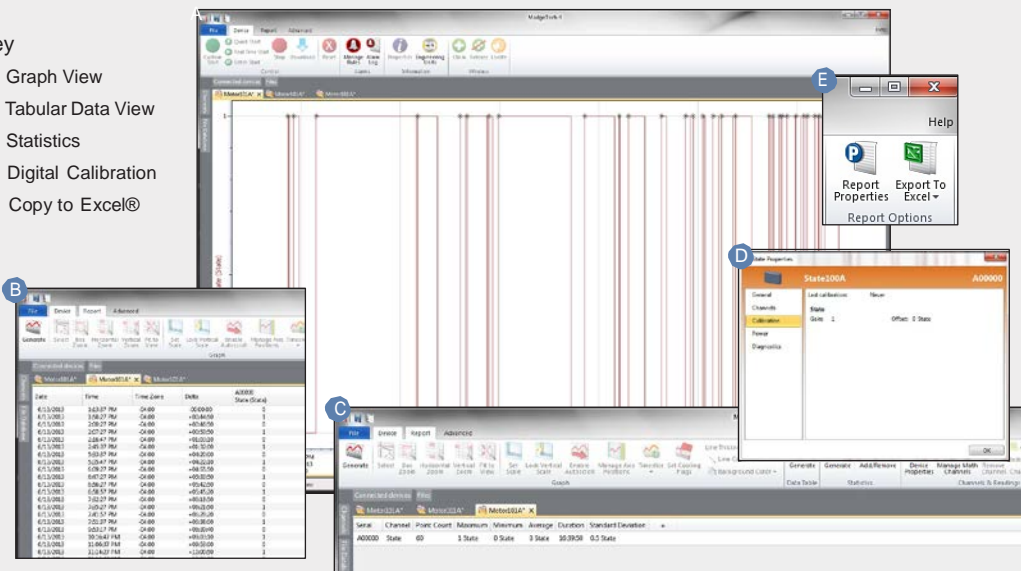
The current switch monitors whether there is current passing through a wire around which it is clamped. When the current exceeds 150mA's, the output changes and provides a voltage for the Motor101A to measure. The device can hold up to 406,323 state changes, but memory will only be used if the status has changed. The device can be programmed to check for status changes 4 times per second up to once every 24 hours.



MADGETECH DATA LOGGER SOFTWARE

Key

- A** Graph View
- B** Tabular Data View
- C** Statistics
- D** Digital Calibration
- E** Copy to Excel®



Software Features:

- Multiple graph overlay
- Statistics
- Digital calibration
- Zoom in/ zoom out
- Lethality equations (F0, PU)
- Mean Kinetic Temperature
- Full time zone support
- Data annotation
- Min./Max./Average lines
- Data table view
- Automatic report generation
- Summary view
- Multilingual

MOTOR101A SPECIFICATIONS*

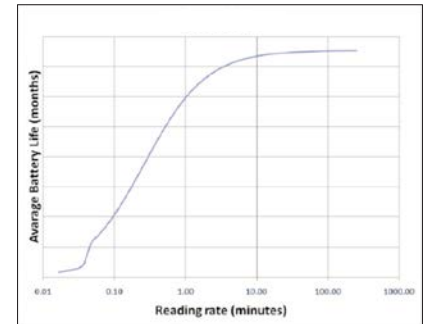
Amperage Range:	0.15-200 Amps
Trip Point:	0.15A (150mA) fixed (200mA AC for 50Hz operation)
Status Output (max.):	N.O. 1.0A@30VAC/DC
Housing:	Split Core
Reading Rate:	4Hz to 1 every 24 hours
Memory:	406,323 readings; software configurable memory wrap
Wrap Around:	Yes
Start Modes:	<ul style="list-style-type: none"> • Immediate start • Delay start up to 18 months • Multiple pushbutton start/stop
Multiple Start/Stop Mode:	Start and stop the device multiple times without having to download data or communicate with a PC
	To start the device: <i>Press and hold the pushbutton for 5 seconds, the green LED will flash during this time. The device has started logging.</i>
Multiple Start/Stop Mode Activation:	To stop the device: <i>Press and hold the pushbutton for 5 seconds, the red LED will flash for three seconds and then the green LED will flash for two seconds. The device has stopped logging.</i>
Real Time Recording:	The device may be used with PC to monitor and record data in real-time
LED Functionality:	Green LED blinks: <i>10 second rate to indicate logging 15 second rate to indicate delay start mode</i> Red LED blinks: <i>10 second rate to indicate low battery and/or full memory</i>
Password Protection:	An optional password may be programmed into the device to restrict access to configuration options. Data may be read out without the password.

Engineering Units: Native measurement units can be scaled to display measurement units of another type such as on/off, open/closed and more.

Battery Type: 3.6V lithium battery included; user replaceable

Battery Life: 10 years typical, dependent upon frequency and duty cycle

Motor101A



Graph display of the device recording in a 25°C environment.

Time Accuracy: ±1 minute/month (at 20°C/68°F, stand alone data logging)

Computer Interface: USB (interface cable required); 115,200 baud

Software: XP SP3/Vista/Windows 7/Windows 8

Operating Environment: -15°C to +40°C (5°F to +104°F),
10%RH to 90%RH non-condensing

Dimensions: Data Logger:
1.4" x 2.2" x 0.6" (36mm x 56mm x 16mm)
Current Switch:
2.1" x 3.5" x 1.0" (54mm x 89mm x 26mm)

Weight: Without IFC200: 4oz (113g)
With IFC200: 9oz (255g)

Materials: ABS Plastic

Approvals: CE

BATTERY WARNING: FIRE, EXPLOSION, AND SEVERE BURN HAZARD. DO NOT SHORT CIRCUIT, CHARGE, FORCE OVER DISCHARGE, DISASSEMBLE, CRUSH, PENETRATE OR INCINERATE. BATTERY MAY LEAK OR EXPLODE IF HEATED ABOVE 80°C (176°F).

*SPECIFICATIONS ARE SUBJECT TO CHANGE WITHOUT NOTICE. SPECIFIC WARRANTY AND REMEDY LIMITATIONS APPLY.

ORDERING INFORMATION

MODEL	DESCRIPTION
Motor101A C	Machinery On/Off Status Data Logging System (includes data logger, current switch and IFC200 interface cable)
Motor101A-NC	Machinery On/Off Status Data Logging System (data logger and current switch)
IFC200	Software, manual and USB interface cable
LTC-7PN	Replacement battery for Motor101A

ASK ABOUT
OUR OTHER
DATA
LOGGERS

Temperature
Humidity
Pressure
pH
Level
Shock
LCD Display
Pulse/Event/State
Current
Voltage Wireless
Intrinsically Safe
Spectral Vibration
Motion

VALUTEMP PTE LTD (Singapore)

Tel: 65-6425 1635

sales@valutemp.com.sg