

# WIND101A WIND SPEED DATA LOGGER

## Features

- Durable Housing for Logger
- 3-cup Anemometer
- 0 to 100 MPH (0 to 160KPH) Range
- 0.085 MPH Resolution at a 10 Second Sampling Rate
- $\pm 2.5\%$  Calibrated Accuracy over 10 to 100 MPH (16 to 160 KPH) Range
- 1 Second Reading Rate
- Multiple Start/Stop Function
- Ultra High Speed Download
- 500,000 Reading Storage Capacity
- Battery Life Indicator
- Optional Password Protection
- Field Upgradeable

## Benefits

- Simple Setup and Installation
- Minimal Long-Term Maintenance
- Long-Term Field Deployment

## Applications

- Alternative Energy Studies
- Meteorology/Climatology
- Wind Turbine Location Assessments



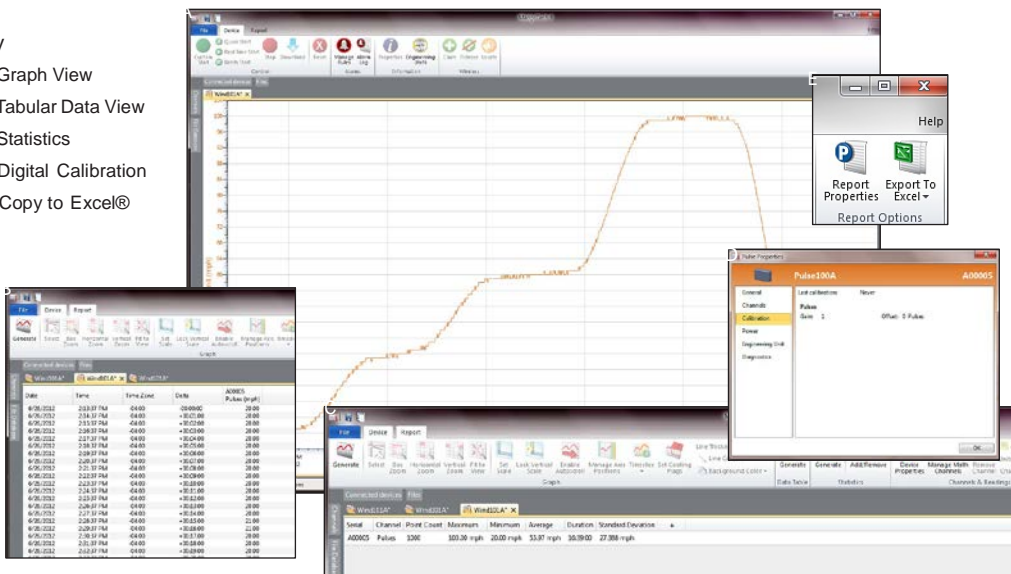
The Wind101A is a complete system to accurately measure and record wind speed. This low cost wind speed recording system comes complete with a data logger, weather-proof enclosure, a three-cup anemometer and all the necessary cabling to quickly get up-and-running. The logger can record up to 500,000 readings and the storage medium is non-volatile, solid state memory, providing maximum data security even if the battery becomes discharged.

The device can be started and stopped directly from a computer using our user-friendly software.

## MADGETECH DATA LOGGER SOFTWARE

### Key

- Graph View
- Tabular Data View
- Statistics
- Digital Calibration
- Copy to Excel®



### Software Features:

- Multiple graph overlay
- Statistics
- Digital calibration
- Zoom in/ zoom out
- Lethality equations (F0, PU)
- Mean Kinetic Temperature
- Full time zone support
- Data annotation
- Min./Max./Average lines
- Data table view
- Automatic report generation
- Summary view
- Multilingual

# WIND101A SPECIFICATIONS\*

Measurement Range:	0 to 100 mph (0 to 45 m/s)
Resolution:	0.085 mph at 10 second reading interval
Accuracy:	±2.0 mph from 0 to 10 mph ±2.5% of reading from >10 to 100 mph
Starting Threshold:	1.75 mph
Reading Rate:	1 reading every second up to 1 reading every 24 hours
Memory:	<ul style="list-style-type: none"> <li>500,000 readings; software configurable memory wrap</li> <li>250,000 readings in multiple start/stop</li> </ul>
Wrap Around:	Yes
Start Modes:	<ul style="list-style-type: none"> <li>Immediate start</li> <li>Delay start up to 18 months</li> <li>Multiple pushbutton start/stop</li> </ul>
Stop Modes:	<ul style="list-style-type: none"> <li>Manual through software</li> <li>Timed (specific date and time)</li> </ul>
Multiple Start/Stop Mode:	Start and stop the device multiple times without having to download data or communicate with a PC.
Multiple Start/Stop Mode Activation:	<p>To start the device: <i>Press and hold the pushbutton for 5 seconds, the green LED will flash during this time. The device has started logging.</i></p> <p>To stop the device: <i>Press and hold the pushbutton for 5 seconds, the red LED will flash during this time. The device has stopped logging.</i></p>
Real Time Recording:	The device may be used with PC to monitor and record data in real time.
LED Functionality:	<p>Green LED blinks: <i>10 second rate to indicate logging 15 second rate to indicate delay start</i></p> <p>Red LED blinks: <i>10 second rate to indicate low battery and/or full memory 1 second rate to indicate an alarm condition</i></p>

Password Protection:	An optional password may be programmed into the device to restrict access to configuration options. Data may be read out without the password.
Engineering Units:	See the Wind101A Quick Setup Guide for instructions on how to program windspeed engineering units.
Battery Type:	3.6V lithium battery included; user replaceable
Battery Life:	Dependent on frequency and duty cycle. 10 months typical at 25 °C and 10 second reading rate
Time Accuracy:	±1 minute/month (at 20 °C/68 °F, stand alone data logging)
Computer Interface:	USB (interface cable included); 115,200 baud
Software:	XP SP3/Vista/Windows 7/Windows 8
Anemometer Operating Environment:	-55 °C to +60 °C (-67 °F to +150 °F); 0 %RH to 100 %RH
Data Logger Operating Environment:	-20 °C to +60 °C (-4 °F to +140 °F), 0 %RH to 100 %RH
IP Rating:	IP65
Anemometer Dimensions:	2.1 in height x 7.53 in Diameter (54 mm height x 192 mm dia.) (mount post not included)
Enclosure Dimensions:	2.9 in x 5.8 in x 1.5 in (74 mm x 148 mm x 39 mm)
Weight:	18.1 oz (513 g)
Materials:	ABS Plastic

**BATTERY WARNING: FIRE, EXPLOSION, AND SEVERE BURN HAZARD. DO NOT SHORT CIRCUIT, CHARGE, FORCE OVER DISCHARGE, DISASSEMBLE, CRUSH, PENETRATE OR INCINERATE. BATTERY MAY LEAK OR EXPLODE IF HEATED ABOVE 80 °C (176 °F).**

\*SPECIFICATIONS ARE SUBJECT TO CHANGE WITHOUT NOTICE. SPECIFIC WARRANTY AND REMEDY LIMITATIONS APPLY.

## ORDERING INFORMATION

MODEL	DESCRIPTION
Wind101A	Wind speed recording system. Includes 3-cup anemometer with sensor connection cable (25'), data recorder, weatherproof enclosure and the IFC200 (USB) interface cable and software kit.
Wind101A-50	Wind speed recording system. Includes 3-cup anemometer with sensor connection cable (50'), data recorder, weatherproof enclosure and the IFC200 (USB) interface cable and software kit.
Wind101A-100	Wind speed recording system. Includes 3-cup anemometer with sensor connection cable (100'), data recorder, weatherproof enclosure and the IFC200 (USB) interface cable and software kit.
Wind101A-150	Wind speed recording system. Includes 3-cup anemometer with sensor connection cable (150'), data recorder, weatherproof enclosure and the IFC200 (USB) interface cable and software kit.
LTC-7PN	Replacement battery for Wind101A

ASK ABOUT  
OUR OTHER  
DATA  
LOGGERS

- Temperature
- Humidity
- Pressure
- pH
- Level
- Shock
- LCD Display
- Pulse/Event/State
- Current
- Voltage Wireless
- Intrinsically Safe
- Spectral Vibration
- Motion

VALUTEMP PTE LTD (Singapore)

Tel: 65-6425 1635

sales@valutemp.com.sg