

# EGGTEMP-RH

## EGG TEMPERATURE & HUMIDITY DATA LOGGER

### Features

- Reusable
- Programmable start time
- User-friendly
- Low cost
- 0 °C to 60 °C temperature range and 0 %RH to 95 %RH humidity
- ±0.5 °C and ±3.0 %RH accuracy
- 0.1 °C and 0.5 %RH resolution

### Applications

- Egg shipment
- Egg storage
- Hatcheries



MadgeTech's EggTemp-RH is specifically designed to measure and record the humidity and temperature of eggs during shipping, storage and incubation. The logger thermally responds to an environment the same way a real egg does, simulating the humidity and temperature experience of the actual product.

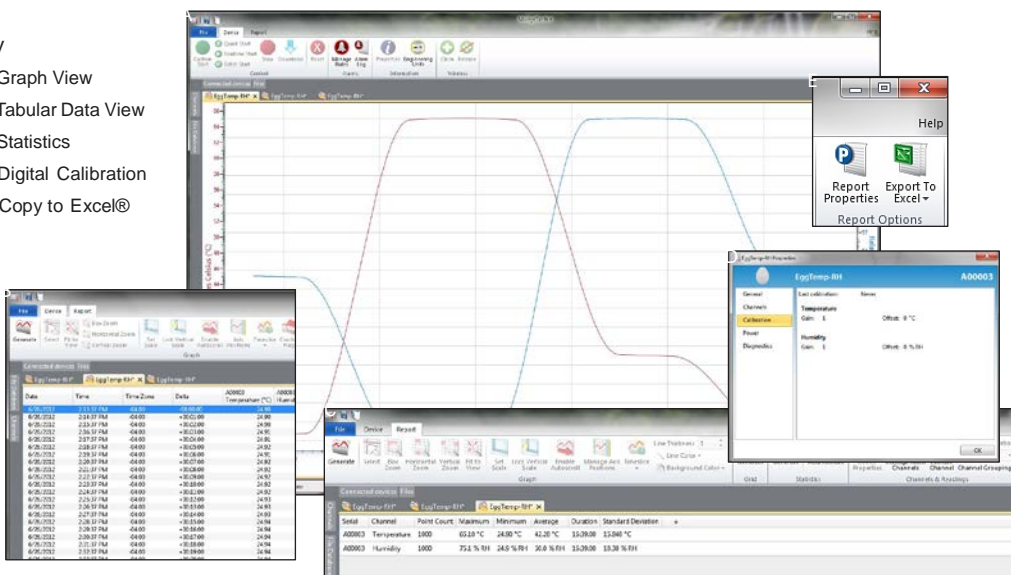
The EggTemp-RH can measure 0 %RH to 95 %RH and up to 60 °C. It has a user replaceable battery, which typically lasts up to 1 year. The non-volatile memory can hold up to 32,767 readings and will retain data even if the battery becomes discharged.

MadgeTech's data logger software offers an easy way to analyze data. Data can be viewed in Celsius or Fahrenheit, and in graph, summary or data formats. For further analysis data can also be exported to Excel.

## MADGETECH DATA LOGGER SOFTWARE

### Key

- Graph View
- Tabular Data View
- Statistics
- Digital Calibration
- Copy to Excel®



### Software Features:

- Multiple graph overlay
- Statistics
- Digital calibration
- Zoom in/ zoom out
- Lethality equations (F0, PU)
- Mean Kinetic Temperature
- Full time zone support
- Data annotation
- Min./Max./Average lines
- Data table view
- Automatic report generation
- Summary view
- Multilingual

# EGGTEMP-RH SPECIFICATIONS\*

|                           |  |
|---------------------------|--|
| Temperature Sensor:       | Semiconductor  |
| Temperature Range:        | 0 °C to +60 °C (+32 °F to +140 °F)   |
| Temperature Resolution:   | 0.1 °C   |
| Calibrated Accuracy:      | ±0.5 °C  |
| Humidity Sensor:          | Semiconductor  |
| Humidity Range:           | 0 %RH to 95 %RH  |
| Humidity Resolution:      | 0.5 %RH  |
| Calibrated Accuracy:      | ±3.0%RH (±2.0%RH typical @ +25 °C)   |
| Specified Accuracy Range: | +10 °C to +40 °C (+50 °F to +104 °F),<br>10 %RH to 80 %RH                        |
| Response Time:            | 90% change in 60 seconds in slow moving air                                      |
| Calibration:              | Digital calibration through software   |
| Start Modes:              | Software programmable immediate start or delay start up to six months in advance |
| Real Time Recording:      | May be used with PC to monitor and record data in real time                      |

**BATTERY WARNING:** DO NOT DISPOSE OF IN FIRE OR RECHARGE—MAY EXPLODE OR LEAK AND CAUSE PERSONAL INJURY.

\*SPECIFICATIONS ARE SUBJECT TO CHANGE WITHOUT NOTICE.

|                        |  |
|------------------------|--|
| Memory:                | 16,383 readings per channel;<br>32,766 total readings  |
| Reading Rate:          | 1 reading every 2 seconds up to 1 reading every 12 hours   |
| Time Accuracy:         | ±1 minute/month @ +20 °C   |
| Data Format:           | Date and time stamped °C, °F, K, °R; %RH, mg/ml water vapor concentration  |
| Battery Type:          | 2 - 1.55V SR1154W batteries included; user replaceable   |
| Battery Life:          | 1 year typical (15 minute reading rate, 25°C)  |
| Activity Indicator:    | Green LED blinks every 15 seconds to indicate device has been started  |
| Temperature Alarm:     | Programmable temperature alarm with high and low limits selectable in software; when logged data reaches or exceeds either limit, the red LED blinks every three seconds |
| Computer Interface:    | PC serial or USB (interface cable required)<br>38,400 baud   |
| Software:              | XP SP3/Vista/Windows 7/Windows 8   |
| Operating Environment: | 0 °C to +60 °C (+32 °F to +140 °F),<br>0 %RH to 95 %RH non-condensing  |
| Dimensions:            | 2.25 in X 1.68 in dia.<br>(57.15 mm x 42.67 mm dia.)   |
| Weight:                | 2.02 oz (60 g)   |
| Material:              | Enclosure: HDPE<br>Logger: 303 Stainless Steel   |

## ORDERING INFORMATION

| MODEL      | DESCRIPTION  |
|------------|--|
| EGGTEMP-RH | EggTemp-RH, egg temperature and humidity data logger |
| IFC102     | Software, manual and RS232 interface cable           |
| IFC202     | Software, manual and USB interface cable             |
| NIST       | NIST Calibration Certificate                         |
| SR1154     | Replacement battery for the EggTemp-RH               |

\*To order the product with the NIST certificate add -CERT to the end of the part number.

**ASK ABOUT OUR OTHER DATA LOGGERS**

- Temperature
- Humidity
- Pressure
- pH
- Level
- Shock
- LCD Display
- Pulse/Event/State
- Current
- Voltage Wireless
- Intrinsically Safe
- Spectral Vibration
- Motion

For enquiries, please contact [sales@valutemp.com.sg](mailto:sales@valutemp.com.sg) or visit our website at [www.valutemp.net](http://www.valutemp.net)