

# CTL2000 CARCASS TEMPERATURE DATA LOGGER

## Features

- IP67, dust proof and splash proof
- Pushbutton or programmable start
- Channel naming for location detection

## Benefits

- Simple Setup and Installation
- Minimal Long-Term Maintenance
- Long-Term Field Deployment

## Applications

- Carcass Temperature Monitoring during Pasteurization
- Verification and Validation of Pathogen Reduction

MadgeTech's redesigned CTL2000 Carcass Temperature data logger is a rugged, one of a kind solution for temperature monitoring during carcass pasteurization cycles. Equipped with eight thermocouple ports, the CTL2000 monitors and records the temperatures of various sections of the carcass during pasteurization, providing a continuous and accurate temperature profile to verify and validate that harmful microorganisms are effectively depleted.

The durable enclosure is drop tested and designed to survive the elements of the slaughter environment. The top of the enclosure is made of food grade stainless steel with an industrial quality custom machined base that skirts the thermocouple ports to guard against debris infiltration and harsh wash down cycles. The quality materials and form factor options were chosen using sanitary standards and guidelines, and made with materials certified for direct food contact as described by NSF-51.



Measuring only eight inches in length and weighing only three pounds, the CTL2000 is easy to handle and hangs securely from the carcass by a single stainless steel hook. This device is capable of withstanding temperatures from -20 °C to 100 °C (-4 °F to +212 °F), allowing it to monitor the entire pasteurization process.

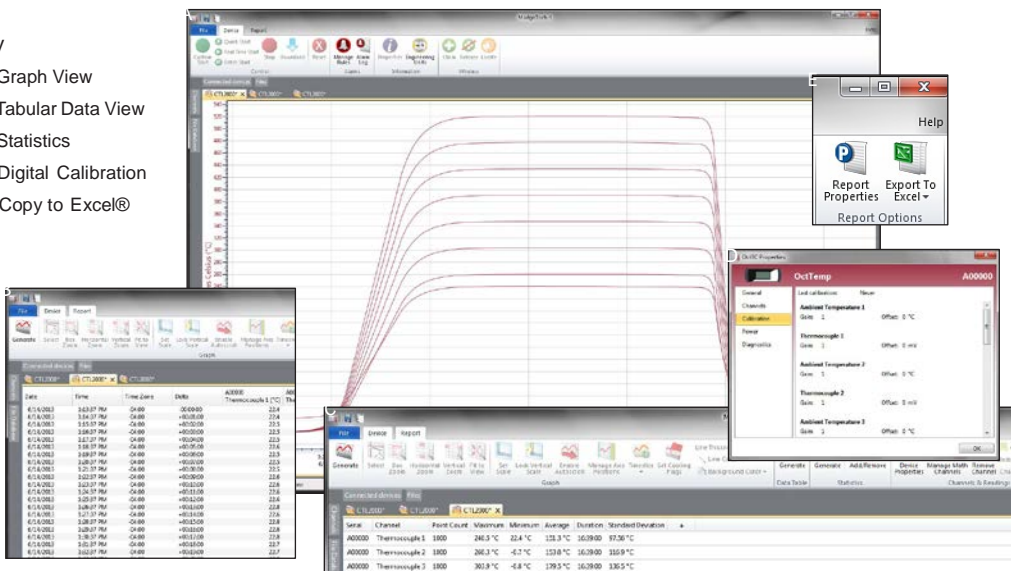
Each channel of the CTL2000 can store up to 129,024 readings which aids in the logging of multiples cycles. Reading rate capabilities range from as fast as four readings per second or as infrequently as one reading every 24 hours. The CTL2000 operates on user replaceable batteries and features a pushbutton start option directly on the device. Delayed start is user programmable from within the MadgeTech Software for up to six months in advance.

The MadgeTech software offers a wealth of data display and reporting options to easily analyze the results of each cycle and provide verification for USDA regulation compliance.

## MADGETECH DATA LOGGER SOFTWARE

### Key

- Graph View
- Tabular Data View
- Statistics
- Digital Calibration
- Copy to Excel®



### Software Features:

- Multiple graph overlay
- Statistics
- Digital calibration
- Zoom in/ zoom out
- Lethality equations (F0, PU)
- Mean Kinetic Temperature
- Full time zone support
- Data annotation
- Min./Max./Average lines
- Data table view
- Automatic report generation
- Summary view
- Multilingual

# CTL2000 SPECIFICATIONS\*

\*SPECIFICATIONS ARE SUBJECT TO CHANGE WITHOUT NOTICE.

## Temperature

### 8 Internal Channels

Internal Channel Temperature Sensor:	Semiconductor
Temperature Range:	-20 °C to +100 °C (-4 °F to +212 °F)
Temperature Resolution:	0.01 °C (0.018 °F)
Calibrated Accuracy:	±0.5 °C (+10 °C to +80 °C)

### 8 Remote Channels

Remote Channel Temperature Sensor:	Compatible with Type K Only ( <i>Thermocouples sold separately</i> )
Thermocouple Connection Type:	Female Subminiature (SMP)
Cold Junction Compensation:	Automatic, based on internal channel
Thermocouple Temperature Range:	-270 °C to +1370 °C (-454 °F to +2498 °F)
Temperature Resolution:	0.1 °C (0.18 °F)
Calibrated Accuracy:	±0.5 °C (±0.9 °F)

**BATTERY WARNING:** FIRE, EXPLOSION AND SEVERE BURN HAZARD. DO NOT RECHARGE, DISASSEMBLE, HEAT ABOVE 100 °C (212 °F), INCINERATE, CRUSH, OR EXPOSE CONTENTS TO WATER.

Reading Rate:	4 readings every second up to 1 reading every 24 hours
Memory:	129,024 readings per channel
LED Functionality:	Green LED: <ul style="list-style-type: none"> <li>Blinks every 2 seconds to indicate unit is logging</li> <li>Blinks every 5 seconds to indicate unit is in delay start mode</li> </ul>
Start Modes:	Software programmable immediate start, pushbutton or delay start up to six months in advance.
Password Protection:	An optional password may be programmed into the device to restrict access to configuration options. Data may be read without the password.
Memory Wrap Around:	Yes
Battery Type:	(2) 3.6V lithium battery included; user replaceable
Battery Life:	4 years typical at a 5 minute reading rate
Calibration:	MadgeTech recommends annual factory calibration. Digital calibration within the software is also available.
Calibration Date:	Automatically recorded within the device
Data Format:	Date and time stamped °C, °F, K, °R, mV, V
Time Accuracy:	±1 minute/month
Computer Interface:	IFC200 USB (Interface cable required)
Operating System Compatibility:	XP SP3/Vista/Windows 7/Windows 8
MadgeTech Software Compatibility:	<ul style="list-style-type: none"> <li>Standard Software version 4.2.5.0 or later</li> <li>Secure Software version 4.2.4.0 or later</li> </ul>
Operating Environment:	Continuous use: -20 °C to +100 °C (-4 °F to +212 °F) 0 %RH to 100 %RH
IP Rating:	IP67
Dimensions:	8.1 in x 6.5 in x 3.1 in (205 mm x 165 mm x 80 mm)
Weight:	3.1 lb (49 oz)
Materials:	<ul style="list-style-type: none"> <li>Enclosure &amp; Hook: 316 Stainless Steel</li> <li>Gasket Seal: EPDM rubber (<i>NSF-51</i>)</li> </ul>

## ORDERING INFORMATION

MODEL	DESCRIPTION
CTL2000	Carcass Temperature Monitoring Data Logger.
CTL2000 (Thermocouple Bundle)	Carcass Temperature Monitoring Data Logger with 8 type K thermocouple probes with a 3 or 6 inch sheath.
TC-K-60-3-125 Probe (3" sheath)	Type K Thermocouple assembly. 60 in PFA wire with a 1/8 in dia. 3 in Stainless Steel Sheath.
TC-K-60-6-188 Probe (6" sheath)	Type K Thermocouple assembly. 60 in PFA wire with a 1/8 in dia. 5.75 in Stainless Steel Sheath.
IFC200	Software, Manual and USB interface cable.
NIST	NIST Calibration Certificate.
TLH-5903	Replacement battery for CTL2000.

ASK ABOUT  
OUR OTHER  
DATA  
LOGGERS

Temperature  
Humidity  
Pressure  
pH  
Level  
Shock  
LCD Display  
Pulse/Event/State  
Current  
Voltage Wireless  
Intrinsically Safe  
Spectral Vibration  
Motion

For enquiries, please contact  
[sales@valutemp.com.sg](mailto:sales@valutemp.com.sg)  
or visit our website at  
[www.valutemp.net](http://www.valutemp.net)

\*To order the product with the NIST certificate add *-CERT* to the end of the part number.