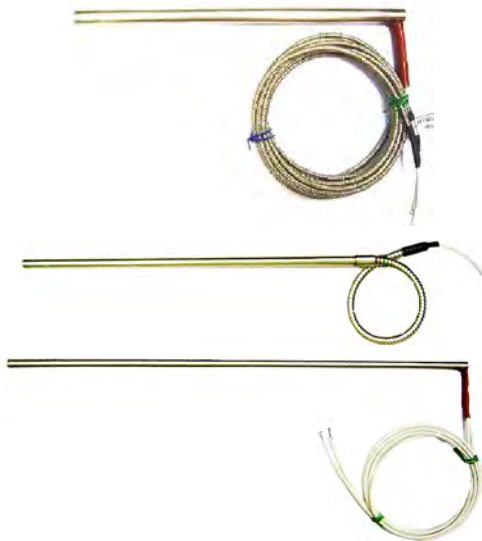


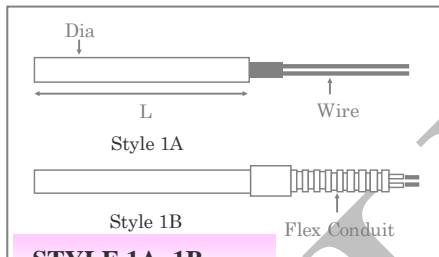
CARTRIDGE HEATER CH-MODEL



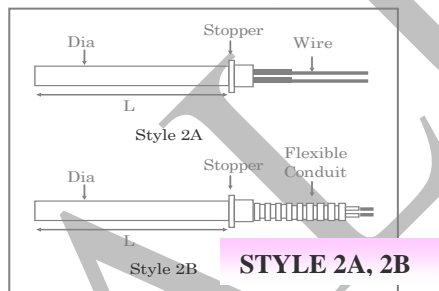
Designed for outstanding performance in applications where high watt densities and or high operating temperatures are required. They offer the advantage of generating high density heat levels in smaller spaces than standard low density cartridge heaters. This is achieved by precisely positioning the wire resistance coil within the body and then compacting the complete assembly to increase the thermal conductivity of the high purity magnesium oxide insulation.

How to Order

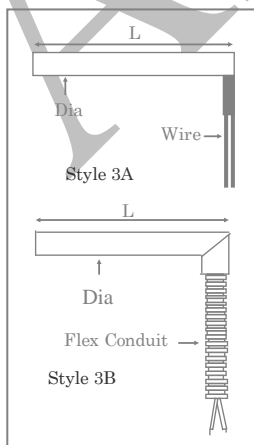
- ✓ Power = _____ W
- ✓ Voltage = _____ V
- ✓ Cartridge Diameter (Dia) = _____ mm
- ✓ Cartridge Length (L) = _____ mm
- ✓ Wire length = _____ mtr
- ✓ Cartridge Style = _____ (See Cartridge Style)
- ✓ 2 zone cartridge heater available, check with sales



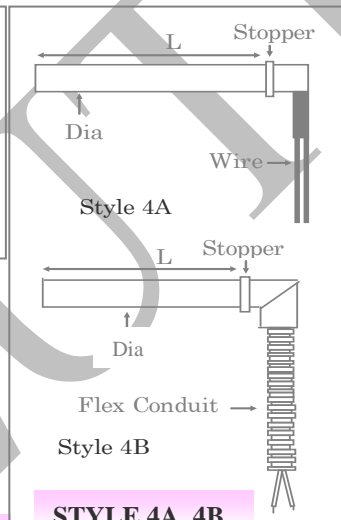
STYLE 1A, 1B



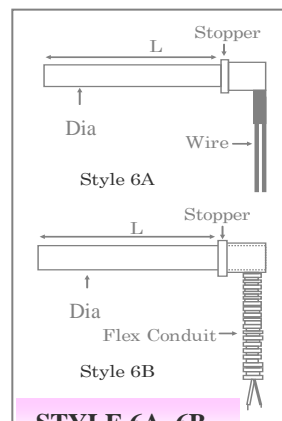
STYLE 2A, 2B



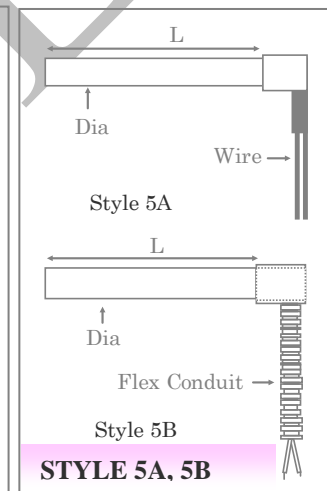
STYLE 3A, 3B



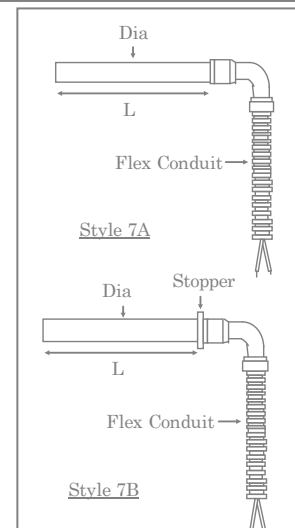
STYLE 4A, 4B



STYLE 6A, 6B



STYLE 5A, 5B



STYLE 7A, 7B