

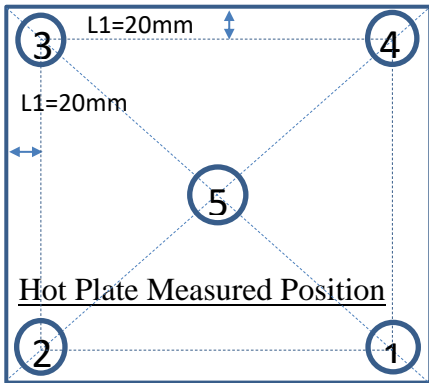
DIGITAL HOT PLATE W PID CONTROL
Heat up to 350 °C (240V)
Fast Heat Up to 350°C
A2-HP MODEL



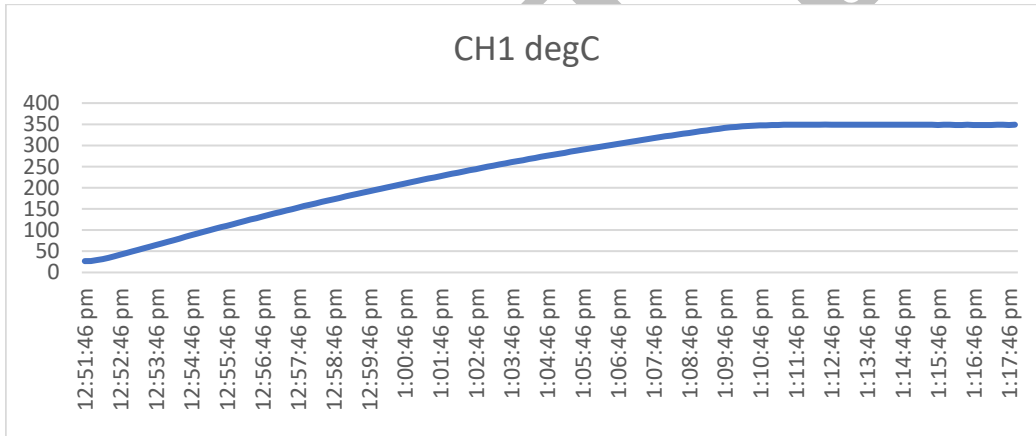
Valutemp Hotplate provide fast heat up time of approx. 15mins to reach 350°C with good accuracy of approx. 3 °C difference between corners & center of the plate. The tolerance of the hot plate can be as good as 0.5°C difference when temperature is used at 100°C. The temperature ramping provides exact heating and cooling rates. It completes with PID digital control for precise plate and probe temperature. Temperature ramp rate is set from 40°C/hr to 350°C/ hr. The Platinum RTD sensor provides precise and accurate measurements over entire temperature range. Indicator light shall indicate that the top plate is hot or unit has reached over temperature status. The hotplate is designed with detachable cord with plug for convenient usage.

DIGITAL HOT PLATE W PID CONTROL Heat up to 350 °C (240V) Fast Heat Up to 350°C A2-HP MODEL

Tolerance / Accuracy Test



Controller setpoint	Measured Temperature °C				Center	Tolerance °C Corners vs Centre point			
° C	1	2	3	4	Position	1 (5-1)	2 (5-2)	3 (5-3)	4 (5-4)
50	50.0	50.1	49.8	49.8	50.1	0.1	0.0	0.3	0.3
100	99.4	99.9	99.2	99.3	99.8	0.4	-0.1	0.6	0.5
150	149.2	150.0	149.3	149.1	149.7	0.5	-0.3	0.4	0.6
250	248.0	249.6	248.4	247.8	248.7	0.7	-0.9	0.3	0.9
350	346.0	348.3	345.4	345.5	345.5	-0.5	-2.8	0.1	0.0



STANDARD MODEL						
ORDER CODE	VOLT AGE	TOP PLATE SIZE mm	TOP PLATE MATERIAL	PLUG TYPE	TEMP RANGE	Remarks
A2-HP-001	240V	105x105	Aluminum	UK std – 3prong	40~350°C	Tolerance +/-2°C Max
A2-HP-002	240V	205x205	Aluminum	UK std – 3prong	40~350°C	Tolerance +/-2°C Max
A2-HP-003	240V	305x305	Aluminum	UK std – 3prong	40~350°C	Tolerance +/-3°C Max
A2-HP-004	240V	405x405	Aluminum	UK std – 3prong	40~350°C	Height 220mm
A2-HP-005	240V	505x505	Aluminum	UK std – 3prong	40~350°C	Height 220mm
A2-HP-006	240V	605x605	Aluminum	UK std – 3prong	40~350°C	-
A2-HP-007	240V	210x300	Aluminum	UK std – 3prong	40~350°C	Tolerance +/-3°C Max
A2-HP-008	240V	330 X 350	Aluminum	UK std – 3prong	40~350°C	Tolerance +/-3°C Max
A2-HP-009	240V	500 X 600	Aluminum	UK std – 3prong	40~350°C	-
A2-HP-010	240V	500 X 600	Aluminum	32A Isolator plug	Up to 500°C	4.8KW